

ST FRANCIS' CATHOLIC PRIMARY SCHOOL



Year 6 Parent's SATs meeting



SATs



- All 11 year olds in England will be taking the Statutory Assessment Tests (SATs) the week beginning May 14th in Reading, Spelling Punctuation and Grammar and Maths. Writing skills are based on teacher assessment.
- Children are expected to working at 'the expected standard or better in English and Maths by the end of their primary school years.
- This test information is used by the government to make judgements on the standards in school and by your child's secondary school to put them in groups them for classes.

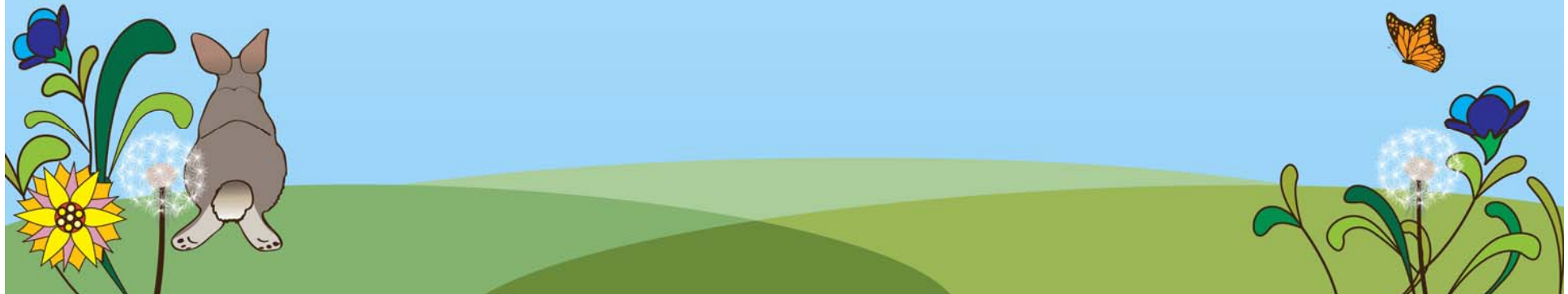


What are SAT Levels?



These tests in English and maths will reflect the new national curriculum, and are intended to be more rigorous. There will also be a completely new marking scheme to replace the existing national curriculum levels.

The previous national curriculum levels have been scrapped, and instead children will be given scaled scores. You will be given your child's raw score (the actual number of marks they get), alongside their scaled score and whether they have reached the national average.



The score needed to reach the national average is 100



- ✦ Reading: 21 out of 50
- Maths: 60 out of 110
- ✦ Grammar, punctuation and spelling: 43 out of 70



Level 6 Tests



Previously, pupils also took papers in [Science](#). Annual sampling tests in Science will now take place every two years, starting in 2014.

Previously schools could elect more able children to take the level 6 test, these test no longer exist and previously level 6 questions are a part of the test that all children take.



How Many Tests Are There?



English: Reading:

- The reading test will be a single paper with questions based on three passages of text. **Your child will have one hour, including reading time, to complete the test.**
- There will be a selection of question types, including:
- **Ranking/ordering**, e.g. 'Number the events below to show the order in which they happen in the story'
- **Labelling**, e.g. 'Label the text to show the title of the story'
- **Find and copy**, e.g. 'Find and copy one word that suggests what the weather is like in the story'
- **Short constructed response**, e.g. 'What does the bear eat?'
- **Open-ended response**, e.g. 'Look at the sentence that begins *Once upon a time*. How does the writer increase the tension throughout this paragraph? Explain fully, referring to the text in your answer.'



English



English: Grammar, Punctuation and Spelling:

- ✦ This test will consist of two parts. A 45 minute written grammar, punctuation and vocabulary test. A Spelling test around 15mins.
- ✦ A child's mark from all three papers (Reading, Grammar and Spelling) are aggregated to create their overall Key Stage 2 English SATs level.

Literacy Written:

- ✦ Pupils are no longer required to take an externally examined KS2 SAT Writing Test. Instead this will now be wrapped up into an externally moderated teacher assessment. Speaking and listening tests will continue to be teacher assessed.



English



The grammar, punctuation and spelling test will consist of two parts: a **grammar and punctuation paper** requiring short answers, lasting 45 minutes, and an **oral spelling test of 20 words**, lasting around 15 minutes.

- The grammar and punctuation test will include two sub-types of questions:
- **Selected response**, e.g. 'Identify the adjectives in the sentence below'
- **Constructed response**, e.g. 'Correct/complete/rewrite the sentence below,' or, 'The sentence below has an apostrophe missing. Explain why it needs an apostrophe.'



Maths



Children will sit three papers in maths:

- Paper 1: **arithmetic**, 30 minutes
- Papers 2 and 3: **reasoning**, 40 minutes per paper
- Paper 1 will consist of fixed response questions, where children have to give the correct answer to calculations, including long multiplication and division. Papers 2 and 3 will involve a number of question types, including:
 - Multiple choice
 - True or false
 - Constrained questions, e.g. giving the answer to a calculation, drawing a shape or completing a table or chart
 - Less constrained questions, where children will have to explain their approach for solving a problem



SATs Results



The tests are marked externally and the school gets the results in July. We will share the results with parents as the last parent conference meetings in July.



Assessment of Writing



- ✦ The written test is no longer sent away to be externally marked and assessed.
- ✦ The on going progress of individual children is carefully tracked and developed throughout the whole of year 6: this level assessed by the teacher is used in conjunction with the written test to agree on a Level.
- ✦ Local Authority moderators visit schools to ensure high standards of teacher assessment.



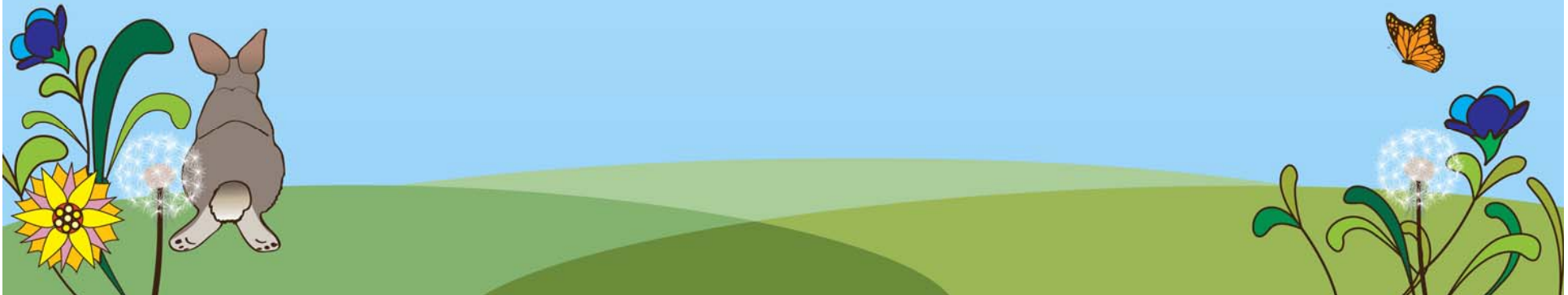
Teacher Assessment of Writing



Three strands are assessed through the writing tests:

- Sentence structure and punctuation
- Text structure and organisation
- Composition and effect.

The composition and effect strand carries the largest number of available marks and is the main focus for this particular test.



Grammar, Punctuation and Spelling Test



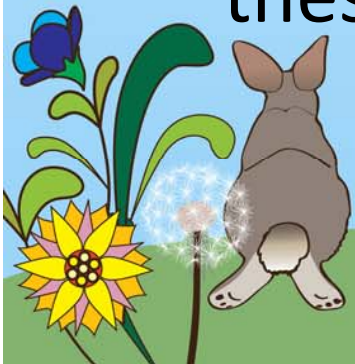
- ✦ Punctuation, sentence-grammar and vocabulary will all be assessed by a series of short-answer questions in a variety of formats. Some question formats will be familiar to children from the current English reading tests and some new ones will be introduced.
- ✦ The spelling test will assess around 20 words and will contribute towards the whole-test score. While different methods of administration are being trialled, the method selected will be broadly in line with spelling assessment in previous National Curriculum tests.
- ✦ A number of methods of testing handwriting are being trialled. If a decision is made to assess handwriting in the final tests the most appropriate method will be selected.



Equipment allowed in each test



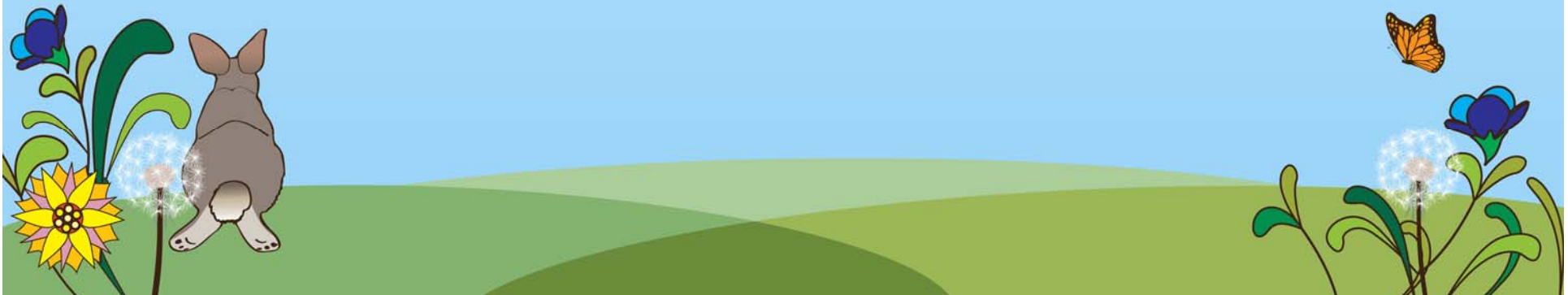
- ✦ No equipment allowed in the Reading Spelling or Grammar Test-Pencils only.
- ✦ Children are allowed a pencil, ruler, protractor and mirror for the Maths Reasoning . They may not need to use all of these.



Easter Booster Classes



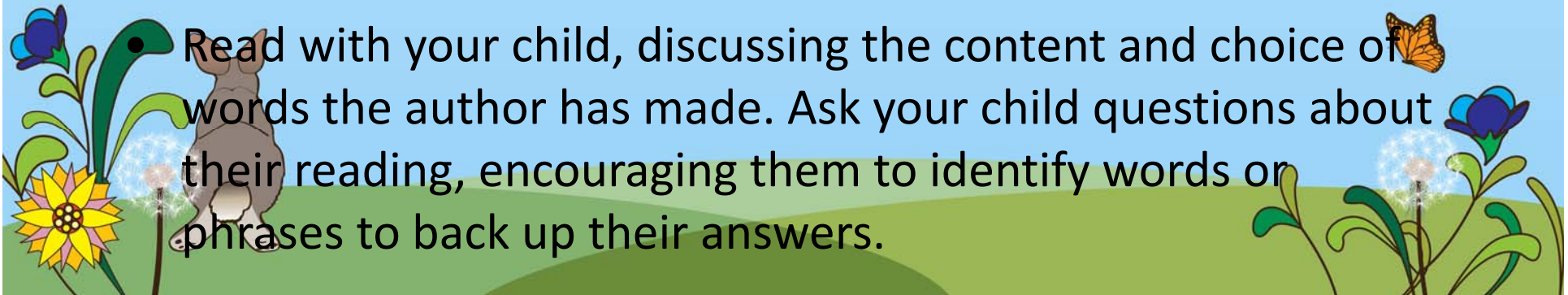
- ✦ These will run from April 9th to 11th
- ✦ They will focus on preparation for the SATs , closing the gaps that a regular school day would not allow
- ✦ The time will be from 9: 00 am to 2:30 pm





How You Can Support Your Child At Home:

- Sensible bedtime.
- Healthy diet – eat breakfast.
- Ensure they always attend booster groups unless they are ill.
- Encourage your child positively, without putting too much pressure on him/her.
- Support with homework – provide a quiet place for work, share the targets, refer to the study guides you loaned.
- Use revision guides and websites to support your child's learning.
- Read with your child, discussing the content and choice of words the author has made. Ask your child questions about their reading, encouraging them to identify words or phrases to back up their answers.



SAT Week Timetable



Monday 14th May 2018 -Key stage 2 English grammar, punctuation and spelling test, Paper 2: spelling.

Tuesday 15th May,2018-Key stage 2 English reading test, reading booklet and associated answer booklet

Wednesday 16th May 2018-Key stage 2 Mathematics, Paper 1 arithmetic test. Key stage 2 Mathematics, Paper 2 Reasoning.

Thursday 17th May, 2018- Key stage 2 Mathematics, Paper 3, Reasoning.

Friday 18th May,2018-No Tests



Now your turn!

✦ Questions?

