



St Francis' Catholic Primary School  
Maryland Park  
Stratford  
London E15 1HB

Tel: 020 8534 0476  
Fax: 020 8555 3068  
Email: [info@st-francis.newham.sch.uk](mailto:info@st-francis.newham.sch.uk)

25<sup>th</sup> November 2022

Dear Parent/Carer,

### **Matthew 24: 37-44**

*<sup>37</sup> As it was in the days of Noah, so it will be at the coming of the Son of Man. <sup>38</sup> For in the days before the flood, people were eating and drinking, marrying and giving in marriage, up to the day Noah entered the ark; <sup>39</sup> and they knew nothing about what would happen until the flood came and took them all away. That is how it will be at the coming of the Son of Man. <sup>40</sup> Two men will be in the field; one will be taken and the other left. <sup>41</sup> Two women will be grinding with a hand mill; one will be taken and the other left. <sup>42</sup> "Therefore keep watch, because you do not know on what day your Lord will come. <sup>43</sup> But understand this: If the owner of the house had known at what time of night the thief was coming, he would have kept watch and would not have let his house be broken into. <sup>44</sup> So you also must be ready, because the Son of Man will come at an hour when you do not expect him.*

Staying awake means noticing and being alert to live in the present so we can recognise the Lord when he appears in our lives. He shows himself in the unrehearsed moments, the interruptions and accidents that can throw me off balance. Teach us, Lord, to recognise your face wherever we encounter you.

### **Class Assembly - 4R**

We will celebrate the work that **4R** is doing in Religious Education with a class assembly on Thursday, 1<sup>st</sup> December at 9:05 am. Parents of children in this class are warmly welcomed to attend.

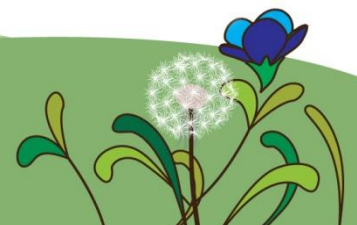
### **Christmas Presents**

We will soon be entering the joyous season of Advent leading to Christmas. Advent is a time of preparation for the celebration of the birth of Jesus. Christmas is an opportunity for you to remember the joy that was experienced at Jesus' birth. This year will be a different Christmas for many of us because of all the current challenges of the cost of living crisis; more than ever it's a time for us to be grateful for all that we have.

As staff at St Francis', we are grateful for each day we get to spend with your child(ren) and grateful that we are able to be a part of their educational and spiritual journey. It is a wonderful gift to be able to work with the children at St Francis'. In light of this, we have decided as a staff team that is enough for us; **therefore, we ask this year that you do not buy us (staff) any gifts; any Christmas gifts that are sent into school for staff will be returned.** The greatest gift that you can give us is a kind word and encouragement. We are humbled that we get to do what we do. **If you want to show us your appreciation please encourage your child to make a card.**



Newham London



Headteacher: Ms Natasha Scott

This year the true meaning of Christmas will be even more important. We look forward to celebrating with you over the coming weeks.

### Parents' Conference Meetings

Thank you to all the parents who attended the recent parents' conference meetings for pupils in years 1-6. We value the working in partnership to support your children.

**There is a parents' conference day for the children in Nursery and Reception on Monday, 12<sup>th</sup> December 2022. This will provide an opportunity for you to meet with your child's class teacher and/or your child's key worker. These appointments are held as a part of the working day so there is no school for Nursery and Reception on Monday, 12<sup>th</sup> December.**

### Christmas Events

As we draw closer to the end of term there are a number of school events to celebrate Christmas, please make note of the dates and times below:

Wednesday 14<sup>th</sup> December 2022 at 9:15 - Reception nativity performance

Thursday, 15<sup>th</sup> December 2022 at 9:15 am - Year 2 Christmas performance

Thursday, 15<sup>th</sup> December 2022 - Christmas lunch (unfortunately parents are not able to attend)

Friday, 16<sup>th</sup> December 2022 at 6:00 pm - KS2 (Years 3-6) Carol Concert at St Francis Church

Monday, 19<sup>th</sup> December 2022 - Christmas class party celebrations

**The Autumn term ends on Tuesday, 20<sup>th</sup> December at 2:00 pm for all pupils. There will be no after school clubs or tea time club on that day.**

### Give and Gain Event

St Francis' works with many organizations to support the school and the community, including the Steve Browne Foundation. The foundation tries to give young people the support they need in order to shape their lives and that of their communities. As a part of this work they are hosting a Give and Gain Event at St Francis' on Friday, 9<sup>th</sup> December from 4:30 - 7:30. Families are able to purchase a ticket on Parent Pay for £10. This allows you access to the event were you able to pick up to five items that are new or nearly new. There will be a variety of items included adult and children's clothing and shoes, home furnishing, toys and household items.

### Parent Advice and Support

We are in difficult times and need to try to support each other as best as we can. The school website has an advice and support section with links to organizations that can provide legal advice, debt management advice and food banks.

<https://st-francis.newham.sch.uk/parents-carers/advice-and-support/>

If you need further advice or support please go to the school office and request an appointment with the Head Teacher.



Newham London



### Newham Libraries

There are ten libraries across Newham, each offering a range of services and community activities. As well as a fantastic selection of books and other reading material of course. **The libraries also provide free computer and internet access.**

<https://www.newham.gov.uk/libraries-arts-culture/newham-library-services>

God Bless,



N. Scott  
Head Teacher



Newham London

